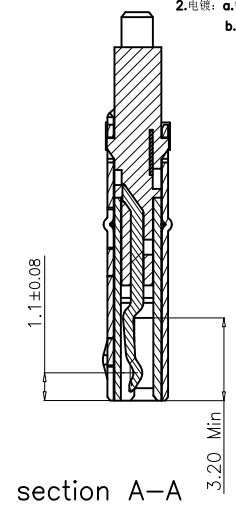
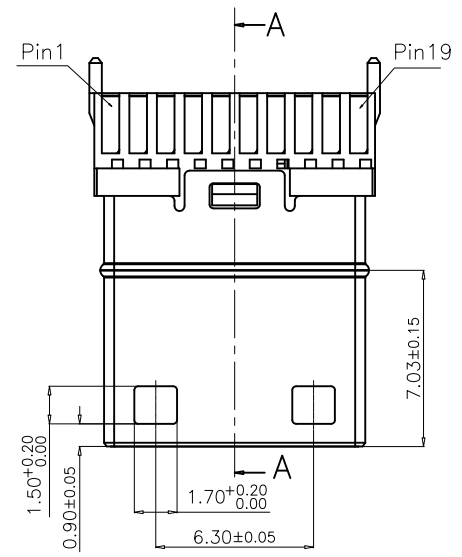
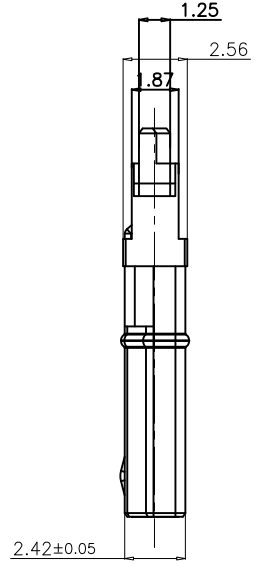
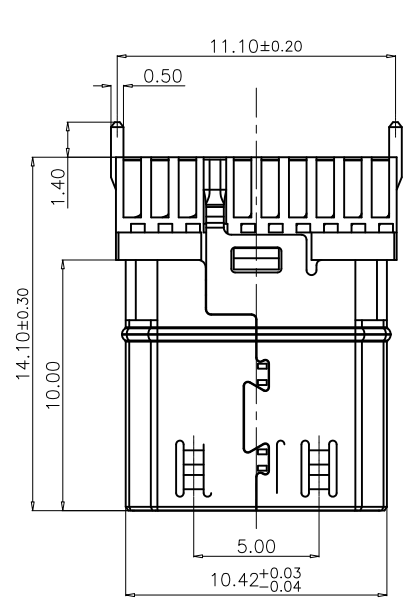
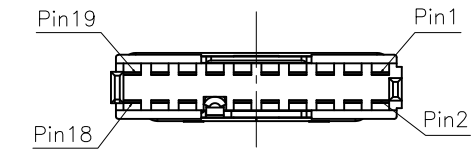


RoHS Compliant

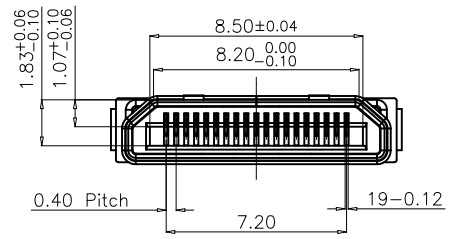
REV.	ZONE	DESCRIPTION	DESIGN	DATE
A		初版发行	JACK	20.12.16



- NOTE:
- Electrical
    - Rated Voltage:40V AC/DC maximum
    - Rated Current:0.5A maximum
    - Dielectric strength:500V AC/1 minute leakage current 10mA Max.
    - Insulation Resistance:15V DC 10M MIN.
    - Contact Resistance:30m Maximum
  - Mechanical
    - Insertion Force Max:44.1N maximum
    - Withdrawing Force:7N minimum, 25N maximum
    - Durability: 5000 cycles at 100±50 cycles per hour. Contact chane from initial value:30miniohms Max.
  - Ambient Temperature:-25°C to +85°C

材质说明:  
 1.材质: 端子: C5191R-H T=0.12mm  
 胶芯: LCP,  
 外壳: C2680 H/SPCC T=0.25mm  
 2.电镀: a.镀层: 外壳镀铜; 镀底50U. 全金1U,3U,5U  
 b.镀金: 端子1U 3U 5U 15U 30U"

Pin NUMBER	SIGNAL NAME
1	TMDS Data2 shield
2	TMDS Data2+
3	TMDS Data2-
4	TMDS Data1 shield
5	TMDS Data1+
6	TMDS Data1-
7	TMDS Data0 shield
8	TMDS Data0+
9	TMDS Data0-
10	TMDS Clock shield
11	TMDS Clock+
12	TMDS Clock-
13	DDC/CEC Ground
14	CEC
15	SCL
16	SDA
17	Reserved(N.C.on device)
18	+5V Power
19	Hot Plug Detect



Unless otherwise specified tolerances are

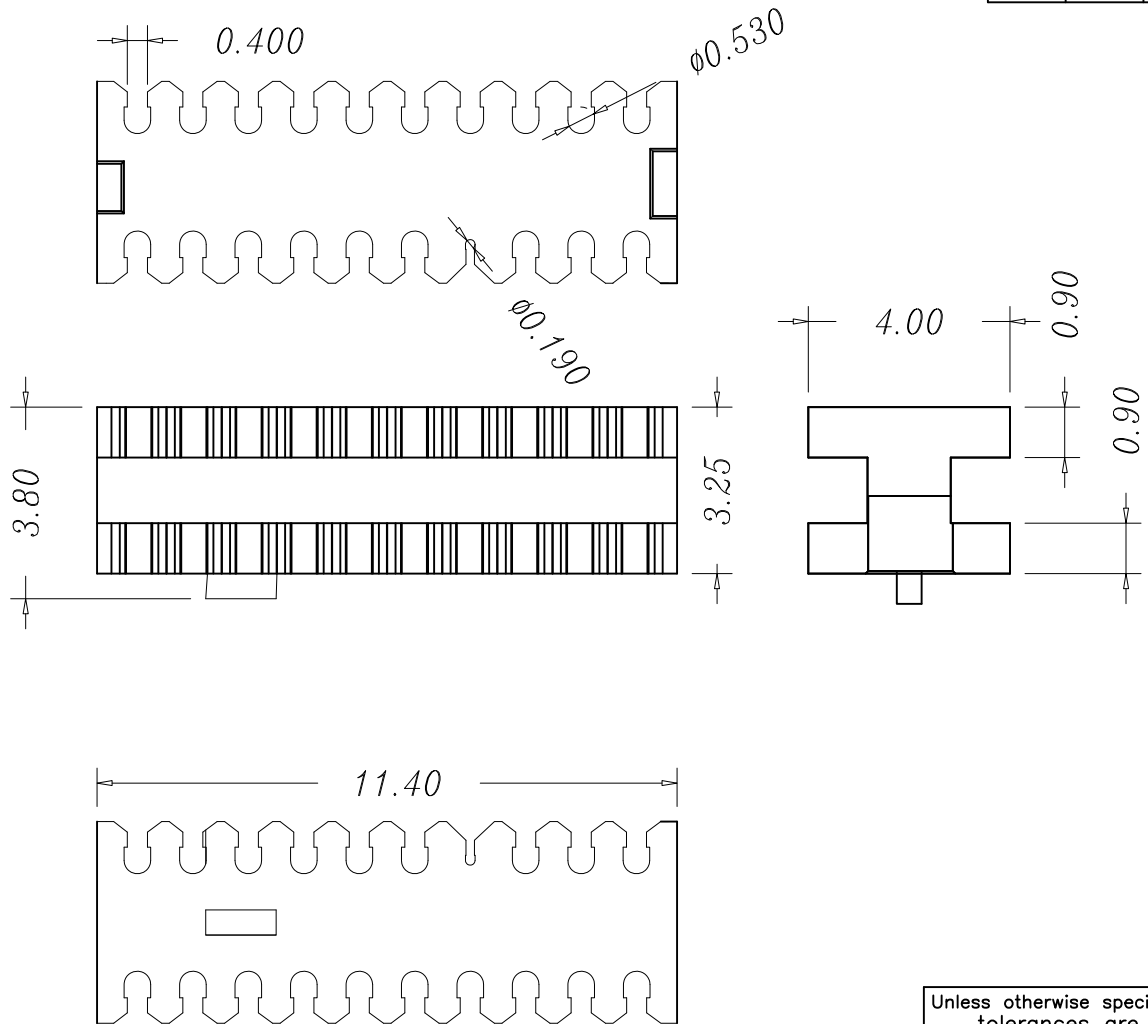
X.X	±0.25	DRAW NO.	DATE	DRAW NAME:	
X.XX	±0.20				
X.XXX	±0.15	DWN	JACK	20.12.16	HDMI C公 自动焊 20P 带地双弹有筋
X*	±2.0°	CHK			
X.X*	±1.0°	APVD			P/N :

Coorle Technology

Third Angle Project	FINISH		UNIT	SCALE	WEIGHT	REV	SHEET
	MATERIAL		mm	1:1		A	1 OF 1

RoHS Compliant

REV.	ZONE	DESCRIPTION	DESIGN	DATE
A		初版发行	JACK	20.11.16



材质说明:  
 1. 材质: PA66+30%G/F UL94V-0.  
 2. 颜色: BLACK.

Unless otherwise specified tolerances are		Coorle Technology							
X.X	±0.25	DRAW NO.	DATE	DRAW NAME: HDMI C公 自动焊 20P 线夹					
X.XX	±0.20								
X.XXX	±0.15	DWN	JACK	20.11.16	P/N :				
X°	±2.0°	CHK							
X.X°	±1.0°	APVD							
 Third Angle Project		FINISH	/ /		UNIT	SCALE	WEIGHT	REV	SHEET
		MATERIAL	/ /		mm	1:1	/ /	A	1 OF 1